

Dinosaurs

The background features abstract, overlapping geometric shapes in various shades of green, ranging from light lime to dark forest green. These shapes are primarily located on the right side of the frame, creating a modern, layered effect against the white background.

Triassic Period 251 and 199 million years ago

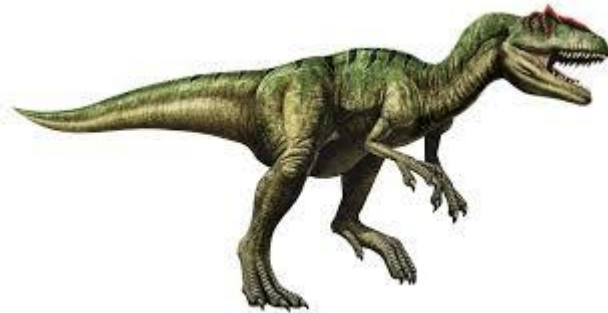
- ▶ The first dinosaurs and first mammals appear
- ▶ The first mammal was a tiny creature called a Morganucodontids
- ▶ Plateosaurus was one of the first dinosaurs, it was about 9 meters in length
- ▶ Did you know that during this time spiders, millipede and centipedes also lived?



The Jurassic Period 199 and 145 million years ago

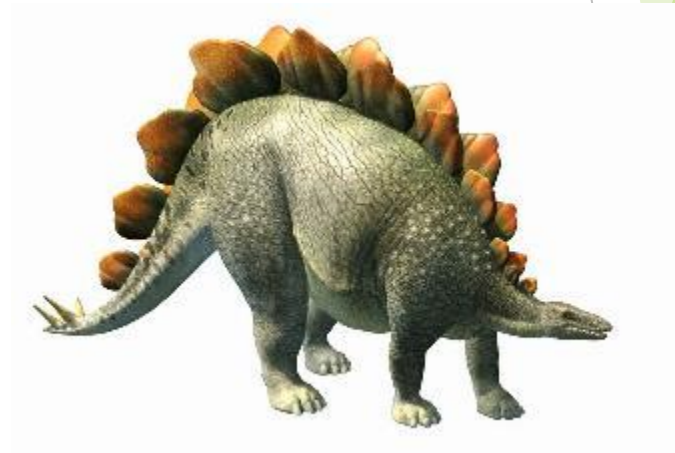


- ▶ During the Jurassic Period the dinosaurs evolved and became the biggest creatures to ever live. Lots of different dinosaurs appeared.



Allosaurus

- Walked on two legs
- They were about 8.5 meters in length
- They weighed around 40 tons



Stegosaurus

- It could grow up to 9 meters in length
- Although it was massive, it's brain was only the size of a dog.

The Cretaceous Period 145 and 65 million years ago



The first flowering plant appears. Scientists think this is what the earliest flower looked like



The first bird was called Archaeopteryx. It had the teeth and tail of a dinosaur.

Towards the end of the Cretaceous Period the dinosaurs started to die out



Cenozoic Period 65 Million years ago mammals start to appear



Humans appear



Rhinoceros



Elephant

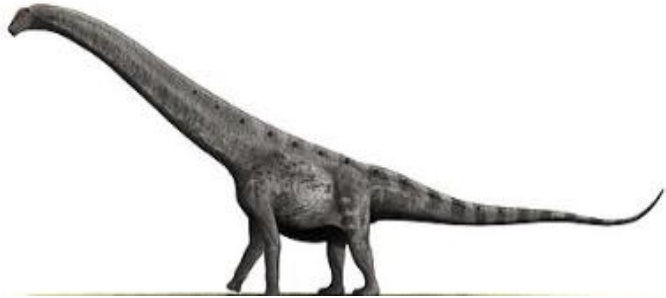


Woolly Mammoth



Saber Toothed Tiger

Dinosaur, long, tall small facts



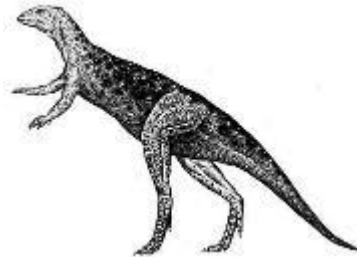
The longest dinosaur

- Argentinosaurus was 40 meters long that's longer than two double decker buses.
- It was the largest animal ever to walk on this planet.
- It took about 15 years for this dinosaur to reach its full size.



The tallest dinosaur

- Brachiosaurus was the tallest dinosaur, it could grow as tall as 16 meters.
- These dinosaurs weighed up to 22.7 tonnes



The smallest dinosaur

- Lesothosaurus grew up to 2 meters in length.
- It walked on two legs.
- It ate plants with its grinding teeth.

How do we know about the dinosaurs?

Scientists who study dinosaurs are called Palaeontologists.
They study fossils and dinosaur bones to understand how dinosaurs lived.



What's a fossil?

Fossils are the preserved remains of an animal or a plant.

- ▶ The dinosaur died and sank to the bottom of a river.
- ▶ The dinosaur would rot away until only its bones were left.
- ▶ Over time sand and mud would cover the bones and would press them into a hard rock.
- ▶ Slowly the bones would wash away and would leave an imprint of the bones in solid rock, this is called a fossil



Dippy the Diplodocus



This is Dippy the Dinosaur, he has been in the Natural History Museum in London since 1905. In 1898 some railway workers unearthed the fossilised bones in Wyoming in the USA. 10 casts were made and were sent to museums all around the world, one set was sent to London.

In 2018, Dippy started to tour the England, Scotland and Wales, he was recently in the National Museum of Wales in Cardiff - maybe you saw him



Dippy is 26 meters long, 4.3 meters wide and 4.2 meters high.